



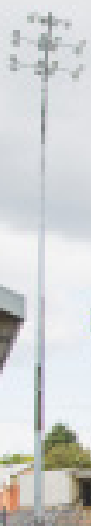
# NOTTS COUNTY FC VISITING SUPPORTER GUIDE

NOTTS COUNTY FC  
FOUNDED 1862



NOTTS  
COUNTY FC

Notts County Football League Club



# GETTING TO MEADOW LANE

## Location of ground

Notts County's stadium is situated at Meadow Lane, Nottingham, NG2 3HJ. The Jimmy Sirrel Stand is allocated to visiting away fans. It is accessed via turnstiles on County Road. Entry is by ticket only and, unless the game has been designated 'all-ticket', any fans arriving at the ground without a ticket should first go to the away supporter ticket booth located at the back of the Jimmy Sirrel Stand. Visiting fans should note that on-the-day ticket purchases are cash only and subject to a £2 price increase.

## Travel directions

If you are travelling to the ground on matchdays, the route is well signposted ('football and cricket traffic') from all directions. You can use the directions provided below to get you into the vicinity of the ground, and then follow temporary matchday signs to local car parks:

### From the North

Leave the M1 at junction 26 and follow signs for Nottingham via the A610 Nuthall Road until you meet the A6514 at Western Boulevard.

Turn right and follow the A6514 ('the ring road south').

Carry straight on at the next roundabout ('the Crown Island') and join Middleton Boulevard.

Stay on Middleton Boulevard, which becomes Clifton Boulevard after the Queen's Medical Centre.

Turn right for Riverside P&R if you are heading for the Embankment, or Riverside Way Park & Ride, and follow signs for Matchday Parking.

Continue around the ring road, carrying straight on at the Nottingham Knight Island and the Wheatcroft Island until you reach the Gamston Island.

Take the first exit left onto the A6011 ('Radcliffe Road').

Continue along the A6011 following the road as it bends to the right and continue over Lady Bay Bridge.

Follow local signs for matchday parking.

### From the South

Leave the M1 at Junction 24 and follow the signs to join the A453 towards Nottingham.

After passing through Clifton, continue on the A453 following signs for football and cricket traffic.

Join the A52 eastbound towards Grantham and carry straight on at the Nottingham Knight Island and the Wheatcroft Island until you reach the Gamston Island.

Take the first exit onto the A6011 ('Radcliffe Road').

Continue along the A6011 following the road as it bends to the right and continue over Lady Bay Bridge.

Follow local signs for matchday parking.

### From the East

Arrive at the 'Saxondale Island' near Bingham from the A46 or A52 and follow the signposts to join the A52 towards Radcliffe-on-Trent and Nottingham.

Follow the A52 through Radcliffe and continue until you reach the next roundabout ('the Gamston Island') then take the 2nd exit onto the A6011.

Continue along the A6011 following the road as it bends to the right and continue over Lady Bay Bridge.

Follow local signs for matchday parking.

# GETTING TO MEADOW LANE

## From the West

From the A/M42 follow signs for Nottingham (avoiding the M1).

From the A50 follow signs for Nottingham South.

Upon reaching the large roundabout (junction 24 of the M1), take the second signposted exit A453, Nottingham.

After passing through Clifton, continue on the A453 following signs for football and cricket traffic.

Join the A52 eastbound towards Grantham and carry straight on at the Nottingham Knight Island and the Wheatcroft Island until you reach the Gamston Island.

Take the first exit onto the A6011 ('Radcliffe Road').

Continue along the A6011 following the road as it bends to the right and continue over Lady Bay Bridge.

Follow local signs for matchday parking.

## By Tram

Fans travelling by car on the M1 can get to Meadow Lane by using the city's Park & Ride tram facilities off the M1 at junctions 24, 25 and 26. Parking is free but tram tickets must be bought before boarding the tram. The closest tram-stop to Meadow Lane is Station Street. With traffic and parking not being easy around Meadow Lane, this is a very practical way of getting to the ground.

From J24, head along the A453, Remembrance Way, towards Nottingham. The tram-stop is Clifton South; post code NG11 8BF. P&R signs very prominent.

From J25, head along the A52 towards Nottingham. The tram-stop is Toton Lane; post-code NG9 6JX. P&R signs very prominent.

From J26, head along the A610 towards Nottingham. The tram-stop is Phoenix Park; NG8 6AS. P&R signs prominent.

For more details on the NET tram network, including routes and timetables, visit their [website](#).

## By Rail

The ground is 10 minutes' walk from Nottingham railway station.

As you come out of the main station entrance, head Southeast on Carrington Street.

Take the first left towards Queen's Road/A6019 and turn left at Queen's Road/A6019.

Turn right at London Road/A60 and take the first left onto Cattle Market Road/A6011.

Take the second right onto County Road/A6011 and turn right at Meadow Lane/A6011, where you will find the ground on the right.

## By Public Coach

Nottingham's coach station, which used to be at Broadmarsh, is temporarily sited on Station Street. To get to Meadow Lane Stadium from there, head east along Station Street to London Road. Turn right onto London Road and after approximately 400m (having passed Hooters on your right) turn left onto Cattle Market Road/A6011. Take the second right onto County Road/A6011 and you will be at the rear of the visitors' stand, the Jimmy Sirrel Stand.

## By Supporters' Coach

Notts County welcome visiting supporters' coaches. Supporters wishing to enquire about parking for privately-run supporters coach should contact [slo@nottscountyfc.co.uk](mailto:slo@nottscountyfc.co.uk). All details regarding supporters' coaches run by the visiting club can usually be obtained from the visiting club's ticket office.

## Parking

There are a limited number of on-street parking spaces on the roads around the ground - all have to be paid for using the Ringo telephone booking service. Details are displayed on adjacent (lamp) posts. Next to the ground, to the rear of the Jimmy Sirrel stand, there is parking available in the Cattle Market and there are also private, manned, parking sites on Meadow Lane - all 'pay at the gate'. Parking charges currently average £5 per vehicle.

# MATCHDAY

## Pre-match eating and drinking venues

Away supporters are encouraged to use the Southbank Bar just across Trent Bridge. Special offers are available to visiting supporters on the production of a valid matchday ticket (details of the offer are printed on the reverse of the ticket).

Slightly further away from Meadow Lane, across Trent Bridge and on Radcliffe Road is the famous Trent Bridge Inn, a JD Wetherspoons Pub on the corner of Trent Bridge Cricket Ground (NG2 6AA).

Down from the railway station, towards the ground, on London Road, Hooters (NG2 3AS) is also a popular pre-match venue with football fans.

Just off Meadow Lane towards Iremonger Road is the Trent Navigation Inn (NG2 3HS) which serves a varied menu and sells some choice beers.

The Broken Wheelbarrow at the back of the stand on Meadow Lane is not available to visiting supporters.

## On-the-day ticket purchasing arrangements and pricing

**If a game has been designated 'all-ticket', visiting fans must purchase their tickets from their own club ticket office in advance.**

Notts County will usually provide tickets in advance to the ticket office of the visiting club for pre-sale. Our club does not charge admission prices to visiting

supporters which are higher than those charged to our own supporters for comparable accommodation. In particular our concessionary rates offered to Notts County senior citizens and junior supporters also apply to supporters of a visiting club. In addition, and unless the game has been declared 'all-ticket', tickets can also be purchased on the day of the game from the away supporters ticket booth located at the back of the Jimmy Sirrel Stand. There is a price increase of £2 per ticket for adults, seniors, 18-21s, under 18 and under 16s on the day. Under 12 and under 7 match ticket prices remain the same on matchday.

## Cash points

The nearest cash point is situated at the Jet petrol station on Meadow Lane, approximately a 3 minute walk from the visiting supporters' turnstiles, but there is a charge for using it. There are also cash points situated within the shops at Lady Bay Retail Park, approximately a 5 minute walk along Meadow Lane from the visiting supporters turnstiles.

## Disabled facilities for visiting fans

Car parking for away disabled supporters is situated in the Meadow Lane car park which is 25 metres from the Jimmy Sirrel Stand. The club has designated areas for disabled persons. For details, contact the Notts County ticket office on 0115 955 7210. Information regarding ground accessibility and much more can be found on the club website, [here](#).

## Anti-discrimination

Notts County operates an anti-discrimination policy at all levels and in every area of its work. The football club will not tolerate sexual or racial-based harassment or other discriminatory behaviour, whether physical or verbal, and will work to ensure that such behaviour is met with appropriate disciplinary action in whatever context it occurs.

## Pyrotechnics

Notts County Football Club operates a zero-tolerance policy toward the carriage and use of pyrotechnic devices. Visiting fans should note that search dogs are deployed around the ground and anyone found to be carrying pyrotechnics will be liable to prosecution.

## Smoking

Notts County Football Club operates a no smoking policy in all areas inside the ground and in the stands. This is also applicable to vaping devices and electronic cigarettes. Away fans wishing to smoke can use the designated smoking area to the rear of the visitors' Jimmy Sirrel stand under the supervision of a steward during the half-time interval. Any supporters attending matches are expected to abide by the policy. If they fail to do so they may be liable to ejection from the ground.

# MATCHDAY

## Musical instruments

The admission of musical instruments is permitted on an individual match by match basis.

Supporters arriving at the turnstiles on a matchday with a musical instrument will be turned away unless they have prior approval. Requests to bring musical instruments into Meadow Lane on a matchday must be sent in writing to [slo@nottscountyfc.co.uk](mailto:slo@nottscountyfc.co.uk) no less than 5 days prior to the fixture.

## Banners

Banners are permitted at Meadow Lane, provided they do not carry messaging that is political, racial, abusive, threatening or likely to cause offence. The decision to admit banners to the stands at Meadow Lane will be taken at the turnstiles by the stewarding team overseen by the match Safety Officer. Supporters who wish to check whether their banner will be admitted in advance of the game can do so by emailing [slo@nottscountyfc.co.uk](mailto:slo@nottscountyfc.co.uk)

## Retail

Football apparel and memorabilia, as well as matchday programmes, can be purchased from the Club Shop on Meadow Lane. In addition, programme sellers operate outside and inside the ground.

## Catering

Hot and cold food and drinks (alcoholic and non-alcoholic) can be purchased from the outlets in the concourse of the Jimmy Sirrel visitors' stand.

## Matchday programmes

Matchday programmes are sold by sellers around and inside the ground. They are also on sale in the Club Shop on Meadow Lane, where a range of football memorabilia and apparel is on sale.



# DON'T MISS OUT

Keep up to date with all the latest news, images and video from Notts County using the club's official social media pages.



**Notts County Football Club**



**@nottscountyfc**



**@Official\_NCFC**



**OfficialNCFC**

If you have any questions related to a matchday, or the club in general, you can direct them to our dedicated Supporter Liaison Officers. The SLOs are a team consisting of club staff and supporters with a wealth of knowledge.



**@slonottscounty**



**slo@nottscountyfc.co.uk**